

(400 WC 361)
CAMBER (UP): 10mm AT MIDSPAN
GRID REF: (D/8)/(E/8)

FIELD BOLTS (PER ASSEMBLY)			
Qty.	Description	Length	Grade
16	M30 x 110 (8.8/S) - AS 1252	110	8.8/S

1	ISSUED FOR CONSTRUCTION	29/10/2018
A	ISSUED FOR APPROVAL	19/10/2018
Index	Description	Date

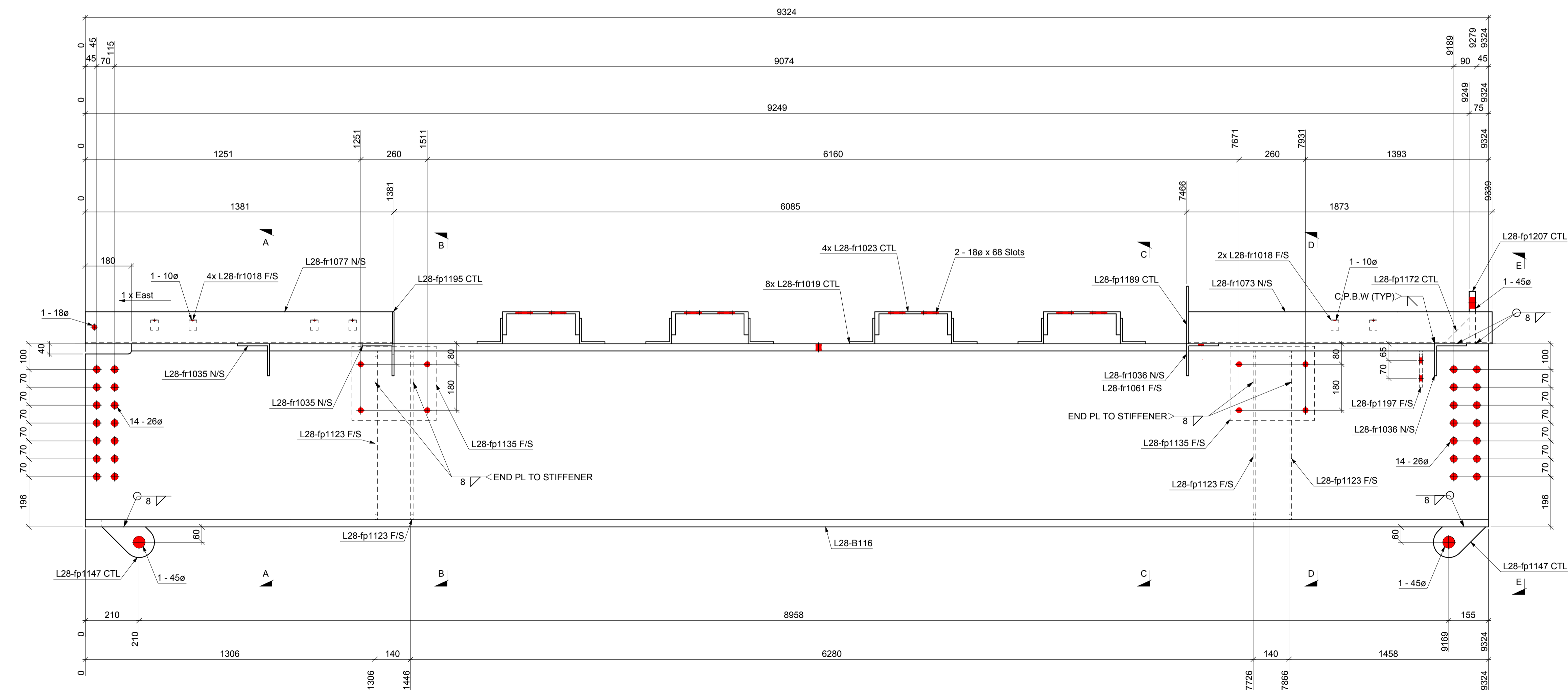
- GENERAL NOTES:**
1. HOLES 22 DIA FOR 8.8S BOLTS UNNOTED.
 2. WELDS 6cFW UNNOTED.
 3. ALL WELDS TO BE CAT. SP IN ACCORDANCE WITH AS1554.1 UNNOTED.
 4. ALL NOTCHES TO HAVE 11mm RADIUS AT INTERNAL CORNERS.
 5. NO PAINT IN WAY OF TF BOLTED CONNECTIONS
 6. THIRD ANGLE PROJECTION UNNOTED.
 7. ALL WORKMANSHIP AND MATERIALS TO BE IN ACCORDANCE WITH AS4100.

Drawings produced with Advance Steel®



DO NOT SCALE - IF IN DOUBT ASK

Detailed:	Shirley	Date:	12/10/2018	A2	Rev:
Checked:	S.F.	Scale:	1:10		1
Client Ref:	5325	Job No:	17-025		



1 - REQ'D AS DRAWN - MK L28-B116
(700 WB 173)
GRID REF: (8/E)/(7/E)

FIELD BOLTS (PER ASSEMBLY)							
Qty.	Description	Length	Grade	1	ISSUED FOR CONSTRUCTION	29/10/20	
1	M16 x 40 (8.8/S) - AS 1252	40	8.8/S	A	ISSUED FOR APPROVAL	19/10/20	
28	M24 x 60 (8.8/S) - AS 1252	60	8.8/S	Index	Description	Date	

GENERAL NOTES:

1. HOLES 22 DIA FOR 8.8S BOLTS UNNOTED.
2. WELDS 60PW UNNOTED.
3. ALL WELDS TO BE CAT. SP IN ACCORDANCE WITH AS1554.1 UNNOTED.
4. ALL NOTCHES TO HAVE 15mm RADIUS AT INTERNAL CORNERS.
5. NO PAINT IN WAY OF TF BOLTED CONNECTIONS
6. THIRD ANGLE PROJECTION UNNOTED.
7. ALL WORKMANSHIP AND MATERIALS TO BE IN ACCORDANCE WITH AS4100.

CLIENT LOGO
HERE

Drawings produced with Advance Steel®



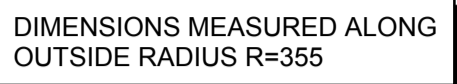
PROJECT INFORMATION
HERE

DO NOT SCALE - IF IN DOUBT ASK

Drawing No :

SF-L28-B116

Detailed:	Shirley	Date:	12/10/2018	A1	Rev:
Checked:	S.F.	Scale:	1:10		1
Client Ref:	5325	Job No:	17-025		



TOTAL ASSEMBLIES						
L34-C16	1	711 x 7.9 CHS	Column	Coating as specified		
TOTAL QUANTITIES PER ASSEMBLY						
Mark	Qty.	Description	Length	Grade	Remarks	Total kg
L34-C16	1	711 x 7.9 CHS	7960	350		1090.03
L34-fp1000	2	90x10 PL	280	250		3.72
L34-fp1004	1	110x12 PL	549	250		5.34
L34-fp1005	2	120x6 PL	415	250		3.04
L34-fp1012	2	90x10 PL	210	250		2.79
L34-fp1015	1	180x20 PL	450	350		11.35
L34-fp1026	1	911x40 PL	911	250		129.74
L34-fp1035	2	121x6 PL	418	250		3.08
L34-fp1068	1	113x16 PL	250	350		3.07
L34-fp1069	1	122x6 PL	425	250		1.57
L34-fp1070	1	124x6 PL	434	250		1.62
L34-fp1071	1	133x16 PL	250	350		3.69
L34-fp1079	1	155x6 PL	526	250		2.08
L34-fp1081	1	159x6 PL	533	250		2.12
L34-fp1105	1	90x12 PL	399	250		3.20
L34-fp1106	1	90x12 PL	500	250		4.06
L34-fr1000	8	RMS 16	86	4.6	M16 THRD'D STUD - S/W N & W1.09	
L34-fr1002	2	33.7x3.2 CHS	1667	C250		8.03
M20N-1000	4	M20 HEX NUT 4.6	33			0.00
Total Point / Assembly (m2):			14.1	Total Weight / Assembly(kg):		
				1279.61		



1 - REQ'D AS DRAWN - MK L34-C16
(711 x 7.9 CHS)
GRID REF: (7/D)

[illegible]

GENERAL NOTES:

1. HOLES 22 DIA FOR 8.8S BOLTS UNNOTED.
2. WELDS 60FW UNNOTED.
3. ALL WELDS TO BE CAT. 5P IN ACCORDANCE WITH AS1554.1 UNNOTED.
4. ALL NOTCHES TO HAVE 15mm RADIUS AT INTERNAL CORNERS.
5. NO PAINT IN WAY OF TF BOLTED CONNECTIONS.
6. THIRD ANGLE PROJECTION UNNOTED.
7. ALL WORKMANSHIP AND MATERIALS TO BE IN

CLIENT LOGO
HERE



PROJECT INFORMATION
HERE

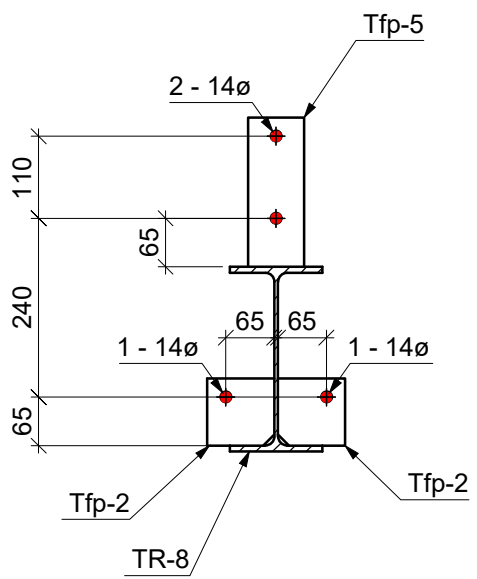
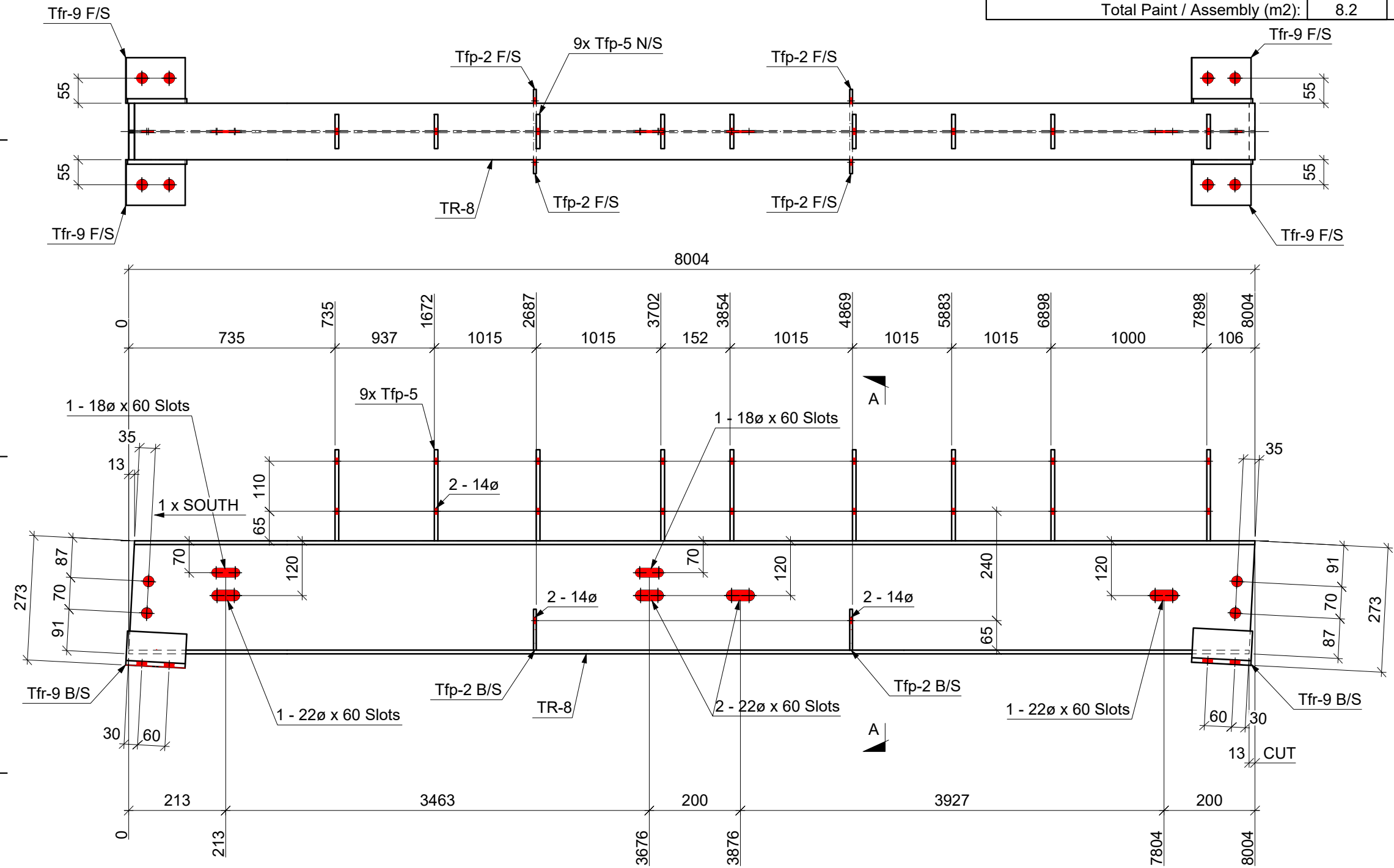
DO NOT SCALE - IF IN DOUBT ASK

© COPYRIGHT STEELFORCE INDUSTRY SOLUTIONS P/L 2014. All rights reserved.

Wing No :				SF-L34-C16	
Issued:	Shirley	Date:	17/12/2018	A1	Rev:
Checked:	S.F.	Scale:	1:10		1

Ref:	5325	Job No:	17-025
------	------	---------	--------

TOTAL ASSEMBLIES							
TR-8	1	250 UB 25.7		Rafter		Zinc Phosphate Primer	
TOTAL QUANTITIES PER ASSEMBLY							
Mark	Qty.	Description		Length	Grade	Remarks	Total kg
TR-8	1	250 UB 25.7		8004	300+		205.04
Tfp-2	4	90x6 PL		90	250		1.48
Tfp-5	9	75x8 PL		200	250		8.30
Tfr-9	4	100x75x10 UA		130	300+		6.22
Total Paint / Assembly (m2):			8.2	Total Weight / Assembly(kg):			221.04



SECTION A - A

1 - REQ'D AS DRAWN - MK TR-8
(250 UB 25.7)
GRID REF:

FIELD BOLTS (PER ASSEMBLY)			
Qty.	Description	Length	Grade
12	M20 x 50 (8.8/S) - AS 1252	50	8.8/S

© COPYRIGHT STEELFORCE INDUSTRY SOLUTIONS P/L 2014. All rights reserved.

Index	Description	Date
1	ISSUED FOR CONSTRUCTION	22/11/2019
A	ISSUED FOR APPROVAL	14/11/2019

- GENERAL NOTES:**
- HOLES 22 DIA FOR 8.8S BOLTS UNNOTED.
 - WELDS 6cFW UNNOTED.
 - ALL WELDS TO BE CAT. SP IN ACCORDANCE WITH AS1554.1 UNNOTED.
 - ALL NOTCHES TO HAVE 11mm RADIUS AT INTERNAL CORNERS.
 - NO PAINT IN WAY OF TF BOLTED CONNECTIONS.
 - THIRD ANGLE PROJECTION UNNOTED.
 - ALL WORKMANSHIP AND MATERIALS TO BE IN ACCORDANCE WITH AS4100.

CLIENT LOGO
HERE

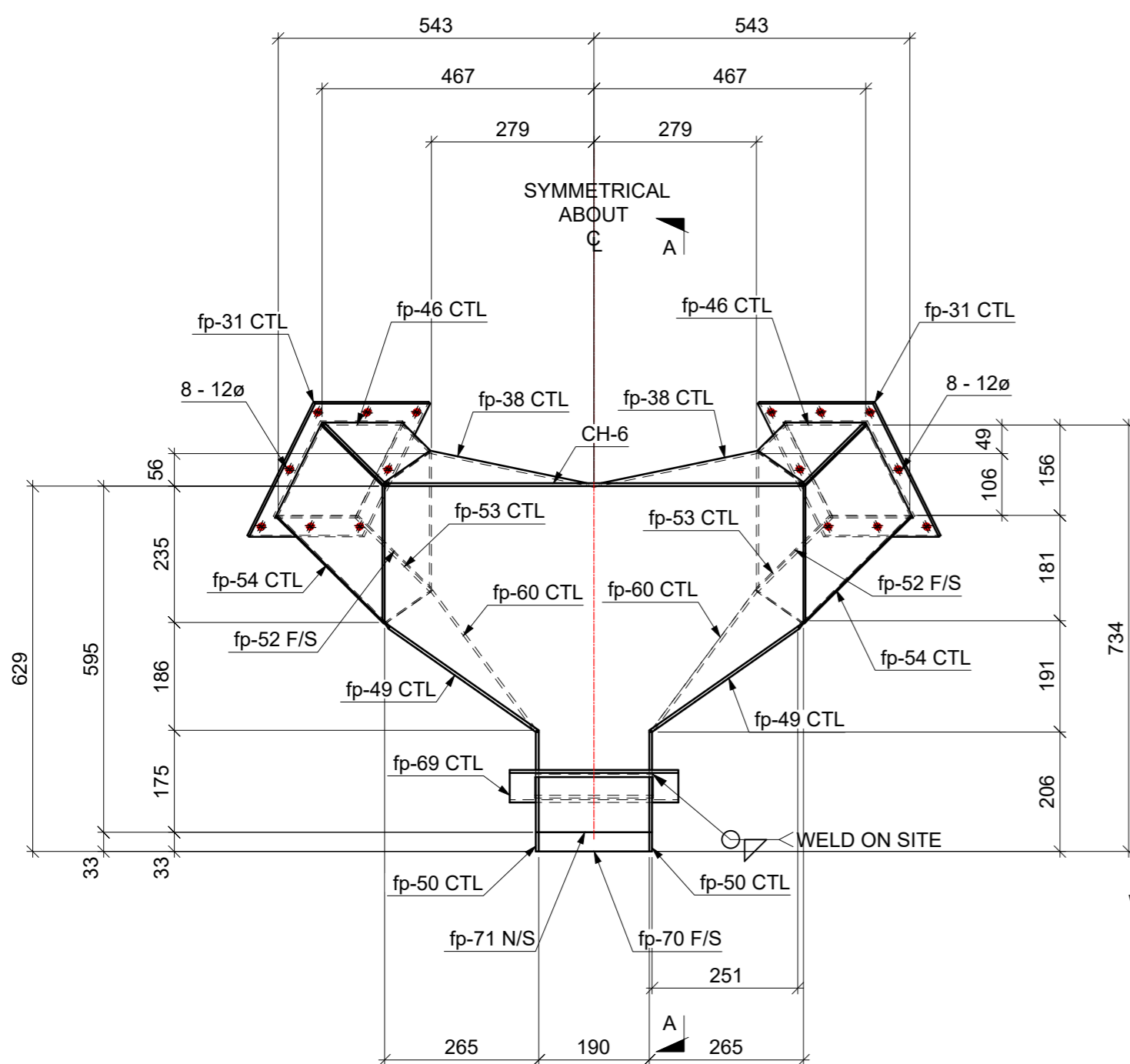
Drawings produced with Advance Steel®

STEELFORCE
INDUSTRY SOLUTIONS PTY LTD
STEEL DETAILING & 3D MODELLING & CAD SOLUTIONS
ACN: 115 578 053 - ABN: 12 519 387 965
Office 14, Level 1 26-28 Verdun Drive, Narre Warren Victoria 3805
Ph: +61 3 9703 0900 Fax: +61 3 9703 0990
E-mail: admin@sfs.com.au

PROJECT INFORMATION
HERE

DO NOT SCALE - IF IN DOUBT ASK

Drawing No : ST TENANCY-TR-8		Rev: 1	
Detailed:	Dardo	Date:	12/11/2019
Checked:	S.F.	Scale:	1:10
Client Ref:	-	Job No:	19-020



Technical drawing of a building section showing structural details and dimensions. The drawing includes the following labels and dimensions:

- Dimensions:**
 - Overall height: 595
 - Overall width: 200
 - Top section height: 56
 - Top section width: 48
 - Bottom section height: 446
 - Bottom section width: 33
- Labels:**
 - fp-38
 - fp-46
 - CH-6
 - fp-54
 - fp-49
 - fp-71
 - fp-49
 - 2x fp-50
 - fp-38
 - fp-52
 - fp-31
 - fp-53
 - fp-60
 - fp-60
 - fp-70
 - fp-69 (LOCATION TO SUIT SITE REQUIREMENTS)
- Notes:**
 - WELD ON SITE

TOTAL ASSEMBLIES						
CH-6	1	190x5 PL	Chute	Galvanised		
TOTAL QUANTITIES PER ASSEMBLY						
Mark	Qty.	Description	Length	Grade	Remarks	
CH-6	1	190x5 PL	706	250	2.70	
fp-31	2	280x5 PL	280	250	2.94	
fp-38	2	142x5 PL	396	250	2.23	
fp-46	2	179x5 PL	190	250	1.95	
fp-49	2	190x5 PL	309	250	2.35	
fp-50	2	190x5 PL	206	250	2.82	
fp-52	2	190x5 PL	217	250	2.24	
fp-53	2	190x5 PL	318	250	4.04	
fp-54	2	190x5 PL	316	250	3.72	
fp-60	2	213x5 PL	297	250	2.53	
fp-69	1	290x5 PL	297	250	1.71	
fp-70	1	559x5 PL	684	250	9.62	
fp-71	1	595x5 PL	720	250	11.25	
Total Paint / Assembly (m2):			2.7	Total Weight / Assembly(kg):		50.12

FIELD BOLTS (PER ASSEMBLY)						
Qty.	Description	Length	Grade	A	ISSUED FOR APPROVAL	22/11/2019
16	M10 x 35 (4.6) - AS 1111	35	4.6	Index	Description	Date

Drawing No :				MISC-CH-6	
Detailed:	Dardo	Date:	20/11/2019	A2	Rev:
Checked:	S.F.	Scale:	1:10		A
Client Ref:	-	Job No:	19-019		